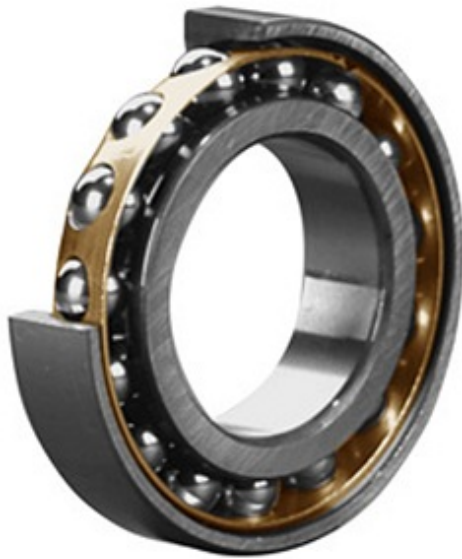




TIMKEN BEARINGS(UK)LTD.



55 mm x 140 mm x 33 mm SKF 7411 BGBM Angular Contact Ball Bearings

Bearing No. 7411 BGBM

7411 BGBM Bearing 2D drawings and 3D CAD models

| | |
|---------------------------------|---|
| Category | Angular Contact Ball Bearings |
| Inventory | 0.0 |
| Manufacturer Name | SKF |
| Minimum Buy Quantity | N/A |
| Weight | 2.66 |
| EAN | 7316576651373 |
| Product Group | B00308 |
| Enclosure | Open |
| Flush Ground | Yes |
| Rolling Element | Ball Bearing |
| Number of Rows of Balls | Single Row |
| Precision Class | ABEC 3 ISO P6 |
| Maximum Capacity / Filling Slot | No |
| Snap Ring | No |
| Cage Material | Brass |
| Contact Angle | 40 Degree |
| Internal Clearance | C0-Medium |
| Number of Bearings | 1 (Single) |
| Preload | Medium |
| Mounting Arrangement | Universal |
| Inch - Metric | Metric |
| Long Description | 55MM Bore; 140MM Outside Diameter; 33MM Width; Open; Yes Flush Ground; Ball Bearing; Single |



TIMKEN BEARINGS(UK)LTD.

| | |
|-------------------------------|--|
| | Row of Balls; ABEC 3 ISO P6; No Filling Slot; No Snap Ring |
| Category | Angular Contact Ball Bearing |
| UNSPSC | 31171531 |
| Harmonized Tariff Code | 8482.10.50.28 |
| Noun | Bearing |
| Keyword String | Angular Contact |
| Manufacturer URL | http://www.skf.com |
| Manufacturer Item Number | 7411 BGBM |
| Weight / LBS | 5.864 |
| B | 1.299 Inch 33 Millimeter |
| d | 2.165 Inch 55 Millimeter |
| D | 5.512 Inch 140 Millimeter |
| bore diameter: | 55 mm |
| radial static load capacity: | 76.5 kN |
| outside diameter: | 140 mm |
| cage material: | Brass |
| overall width: | 33 mm |
| outer ring width: | 33 mm |
| contact angle: | 40 ° |
| maximum rpm: | 6300 RPM |
| row type & fill slot: | Single-Row Non-Fill Slot |
| finish/coating: | Uncoated |
| internal clearance: | C0 |
| precision rating: | ABEC 3 (ISO Class 6) |
| closure type: | Open |
| fillet radius: | 2 mm |
| radial dynamic load capacity: | 111 kN |
| series: | 74 |
| d | 55 mm |
| | |



TIMKEN BEARINGS(UK)LTD.

| | |
|---|------------|
| D | 140 mm |
| B | 33 mm |
| d ₁ | 88.5 mm |
| d ₂ | 72.01 mm |
| D ₁ | 108.4 mm |
| a | 57.8 mm |
| r _{1,2} min. | 2.1 mm |
| r _{3,4} min. | 2.1 mm |
| d _a min. | 67 mm |
| D _a max. | 128 mm |
| D _b max. | 126.7 mm |
| r _a max. | 2 mm |
| r _b max. | 2 mm |
| Basic dynamic load rating C | 111 kN |
| Basic static load rating C ₀ | 76.5 kN |
| Fatigue load limit P _u | 3.25 kN |
| Reference speed | 6300 r/min |
| Limiting speed | 6300 r/min |
| Calculation factor A | 0.112 |
| Calculation factor k _r | 0.1 |
| Calculation factor e | 1.14 |
| Calculation factor X | 0.35 |
| Calculation factor Y ₀ | 0.26 |
| Calculation factor Y ₂ | 0.57 |
| Calculation factor X | 0.57 |
| Calculation factor Y ₀ | 0.52 |
| Calculation factor Y ₁ | 0.55 |
| Calculation factor Y ₂ | 0.93 |
| Mass bearing | 2.75 kg |