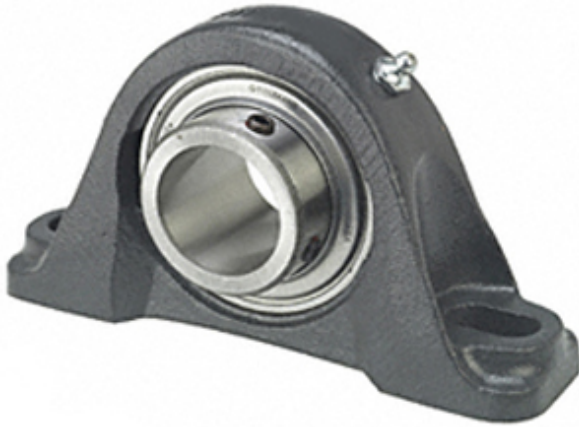




TIMKEN BEARINGS(UK)LTD.

2 Inch | 50.8 Millimeter x 2.188 Inch | 55.575 Millimeter x 2.5 Inch | 63.5 Millimeter TIMKEN YAS2 Pillow Block Bearings



Bearing No. YAS2

YAS2 Bearing 2D drawings and 3D CAD models

Category	Pillow Block Bearings
Inventory	3.0
Manufacturer Name	TIMKEN
Minimum Buy Quantity	N/A
Weight	4.03
EAN	0087796157811
Product Group	M06110
Number of Mounting Holes	2
Mounting Method	Set Screw
Housing Style	2 Bolt Pillow Block
Rolling Element	Ball Bearing
Housing Material	Cast Iron
Expansion / Non-expansion	Non-expansion
Mounting Bolts	5/8 Inch
Relubricatable	Yes
Insert Part Number	GY1200KRRB
Seals	Double Land Riding Rubber Contact
Housing Configuration	1 Piece Solid
Inch - Metric	Inch
Other Features	Single Row Spherical Normal Duty High Base
Long Description	2 Bolt Pillow Block; 2" Bore; 2-1/2" Base to Center Height; Set Screw Mount; Ball Bearing; 5-25/32"



TIMKEN BEARINGS(UK)LTD.

	Minimum Bolt Spacing; 8-3/32" Bolt Spacing Maximum; Relubricatable; Cast Iron; D
Category	Pillow Block
UNSPSC	31171511
Harmonized Tariff Code	8483.20.40.40
Noun	Bearing
Keyword String	Pillow Block
Manufacturer URL	http://www.timken.com
Manufacturer Item Number	YAS 2
Weight / LBS	8.869
Actual Bolt Center to Center	0 Inch 0Millimeter
d	2 Inch 50.8 Millimeter
B	2.5 Inch 63.5 Millimeter
Nominal Bolt Center to Center	6.8 Inch 171.5 Millimeter
Bolt Spacing Maximum	8.094 Inch 205.6Millimeter
D	2.188 Inch 55.575 Millimeter
Bolt Spacing Minimum	5.781 Inch 146.837Millimeter